

## Smart Building & Office Solutions

Improve efficiencies with just one IoT platform



# Smart Building & Office Solutions

Digitize every part of your building or office to improve efficiencies and create a productive space for tenants and employees with just one IoT platform

## Industry Insights

Buildings are one of the biggest energy consuming entities, so monitoring them has become of great interest for trying to avoid non-necessary costs. Smart buildings and smart offices are therefore driving innovation in IoT. People spend most of their time inside a building, including offices, retail stores, and homes. It's not a surprise then that buildings are responsible for 40% of the energy consumption in developed countries. And, energy usage is expected to grow 45% over the next 20 years, so gaining knowledge about usage and finding ways to reduce consumption should be a common goal for all businesses.

\*Source: MDPI Smart Buildings study.

## The Challenge

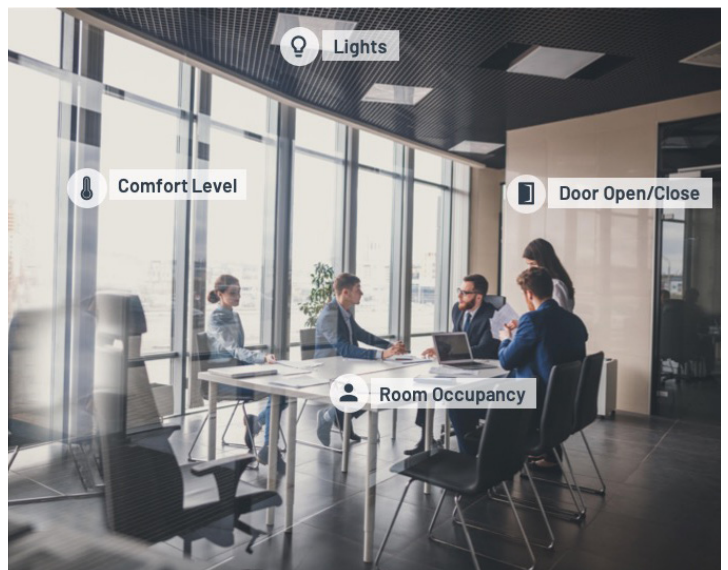
Physical space is a hot commodity. Open floor plans, hotdesking, and co-working spaces are increasingly more common as workers are becoming more collaborative or mobile. Companies and businesses need help optimizing space usage since unused space wastes rent and increases utility and maintenance costs. Companies should be able to collect space utilization data and transform it into actionable insights for effective workplaces, but don't know where to start.

## The Axonize Solution

Axonize empowers buildings and offices to become smarter and save money by providing an end-to-end solution. Axonize provides companies with everything needed to track, monitor, and react to every aspect or occurrence in an office or enterprise from one simple platform. Our end-to-end solution allows clients to capture important data, reduce overhead costs, and increase ROI quickly. Think: Happier tenants and workers with an efficient and environmentally-friendly work environment with smart uses of space.



Smart Building Lobby Example



Smart Conference Room Example

## Why Smart Buildings & Offices?

How often do lights or A/C stay on in a room when no one is using it? Are the doors and windows shut at the end of the day? These are questions you should be able to answer at any given time. Recording, analyzing and evaluating your building spaces gives you control to monitor the quality of spaces for employees and tenants, as well as gain insights for added security and reduced costs.

## A Complete End-to-End Solution Powered By Axonize

As a client, you'll receive all sensors, our building application and dashboards, occupancy data, capability to set rules for your space, and instant alerts to enable cost savings to react promptly when space isn't being utilized to its full potential. Axonize sits on any existing solution your company may have in place already.

## Axonize Will Update How Your Office Works: Use Cases in Action

How will your smart building or office function and save once it's all connected via Axonize?

- **Overall occupancy:** Many companies notice similar employee behaviors and usage from Monday-Thursday, but on Fridays more workers may be remote or leave the office early. Motion sensors allow these companies to track patterns, count employees, and know if spaces are truly being utilized to save on unnecessary energy.
  - **Axonize provides two levels of occupancy detection:**
    - **Motion detection:** Recognizing human presence in an office or room
    - **People counting:** Identifying how many people are in an office or room
- **Meeting room reservations vs. usage:** Movement sensors can help companies compare real meeting room usage with reservations stored in the room booking system. Incorrect usage of reservations may result in empty meeting rooms while workers are trying to reserve ones without success, a loss in productivity which doesn't need to occur. (Ex: A rule can be set so that a reservation is cancelled 10 minutes after a meeting start time should no one enter the room)
- **Shared desks:** Sensors allow companies to analyze desk occupation and release reserved desks which are not actually being used in shared office spaces (Ex: If most desks are regularly unused after 5pm, they can offer to rent out these unused desks for added revenue)
- **Room comfort:** Monitor and set comfort parameters, including temperature, humidity, CO2, light, and noise depending on 'rules' that you set, including how many people are occupying a room or the purpose that the room serves for improved workplace experiences or client entertaining
- **Doors/windows:** Monitor and analyze door/window openings and closings to ensure your building or workspace is secure at all times
- **Room energy usage:** Monitor and analyze room usage and notify employees to switch to smaller rooms which use less energy when they rent out larger ones but do not need the extra space
- **Optimized seating:** Set preferences to allow employees to book desks or meeting rooms near fellow employees, on specific floors, or near preferred locations, such as the window, for an improved workplace experience
- **Optimization of shared office spaces:** Analyze how and when spaces are being used to be able rent out unused spaces and set pricing based on common patterns or preferred locations, and make money off of unused spaces whenever possible
- **Visitor management:** Make a good first impression and implement sensors to promote security, as well as detect when visitors arrive to notify their hosts.
- **Smart parking:** Optimize parking space usage with sensors to deliver better experiences to employees and visitors for a seamless parking experiences, including pre-bookings or meet-and-greets when motion is detected.

## Types of Sensors & Equipment Provided Include:

- **Presence:** Detecting motion, monitoring temperature, and easily mounted
- **Comfort:** Monitoring air quality, temperature, humidity, noise, CO2, and powered by a USB outlet
- **Motion:** Monitors occupancy, temperature, humidity, light, sound, and easily mounted
- **Energy Consumption:** Allows you to monitor your energy consumption in a cost effective manner to avoid unnecessary spending
- **Room Occupancy:** People counting sensor that supports people entering and exiting with 95% accuracy and multiple types of entries

## Key Reports & Analytics Provided by Axonize

1. **Visibility:** Multi-Customer dashboards and reports  
Gain visibility into every sensor and how it impacts your business – including overall statistics analyzing space usage by your tenants and employees, usage of energy, lighting, and A/C, and wastage to learn where you can cut costs.
2. **Automation:** Customizable rules engine  
Set parameters and limits to enable automatic alarms, such as if a room is empty to turn off the A/C or if a temperature reaches below a certain level to turn the heat on.
3. **Cross Analytics:** Cross-system/sensor charts  
The Axonize platform allows for all of your devices to speak to each other to ensure you have an overall picture of your building or office space at any given time.
4. **Device Management:** Additional layer of resource optimization  
Manage your devices from your phone or remotely and instantaneously.
5. **Multi-tenancy:** User hierarchies based on any IoT logic  
Ensure multiple building or company stakeholders can access your systems, but grant access or notification alerts to specific individuals who need them.

## Our Mentality: Start Small & Scale

Connecting an entire office or building shouldn't feel daunting. Axonize can work with you to start with any project, small or large, and scale. We're here to guide you every step of the way.

## Main Benefits of Axonize



Facility management ecosystem platform



Unprecedented Speed, Simplicity & Scalability



Certified security, based on breakthrough technology



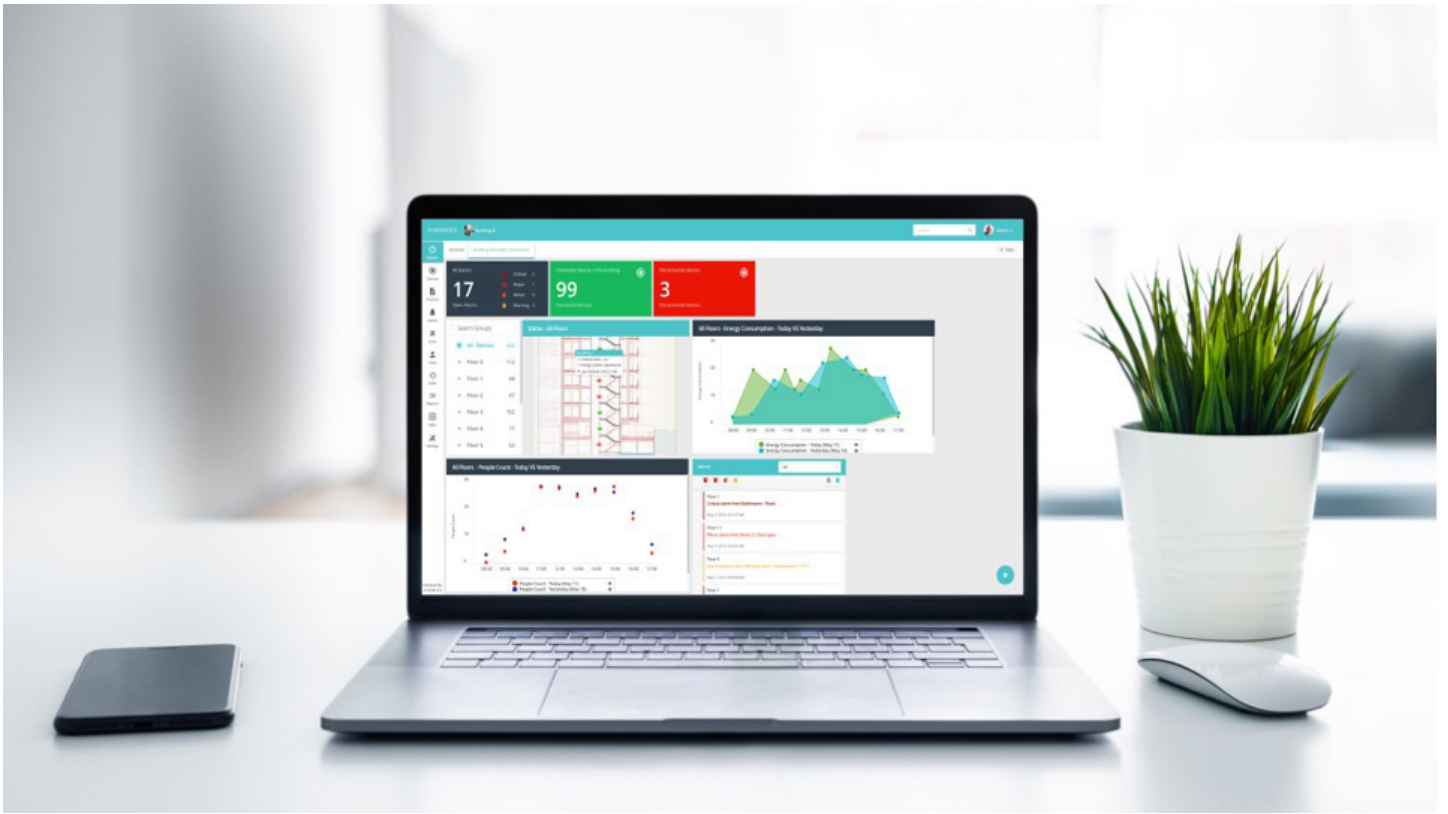
Fully flexible with near-zero development needed



Monitor & optimize all customers with a single pane of glass



Quickly realize your IoT profit potential



## About Axonize

Axonize is an IoT orchestration platform, purpose-built to provide speed and scale for service providers and their end customers, developing and managing IoT applications. Based on a unique multi-application architecture that requires configuration rather than development, launching a full-fledged IoT project on Axonize requires mere days, rather than months, and yields a high ROI. Axonize is used by leading companies, including ISS, Deutsche Telekom, DHL and Optus.



Contact me to schedule a walk-through: [janivr@axonize.com](mailto:janivr@axonize.com)