



## Smart Buildings: The Future of Facility Management

Digitize every part of your multi-disciplinary facility management- business with just one IoT platform

### The multi-disciplinary. multi-building. multi-customer challenge.

Facility management is a multi-disciplinary business, focusing on the most efficient delivery of services. Whether it's providing an array of services to each customer, multiple customers or buildings, the most effective solution is - a smart solution.

Infusing IoT technology into facility management is the perfect marriage. Creating smart buildings, where every aspect of facility management is managed from one, simple platform is the ultimate definition of efficient delivery.

Imagine the ability to monitor each building, with its own set of systems, such as BMS, fire, security, etc, from one centralized location, with all customer requirements being handled on one platform.

As more systems are connected to the smart building, opportunities arise for better monitoring, costs savings, operational efficiency and improved tenant satisfaction.

### Any sensor or system.

The key in creating a smart building lies within the connectivity and measuring of sensors. You gain immediate value by integrating your existing systems with your smart building sensors. Orchestrating, monitoring, performing actions and gaining insights on all your systems and sensors, in tandem, will immediately reduce overhead and lessen the daily work load.

Looking to the future, each smart building will continue to integrate with any system or sensor added. This allows for easy digitization of new aspects within the business, as well as taking on new facilities with different systems and sensors without an overhaul of your management system or a significant new technology investment.



## Connecting buildings. Not just devices.

A smart building is essentially a large, connected enterprise. Whereas many IoT companies focus on simply connecting products, Axonize connects multiple enterprises across various industries, creating smart buildings and cities. We focus on connecting the entire puzzle, rather than piece-by-piece.

Using 5 key technologies, Axonize is uniquely designed to manage the wide array of software, devices and sensors that facility managers are using to transform buildings into smart connected enterprises.



### Visibility

Multi-Customer dashboards and reports



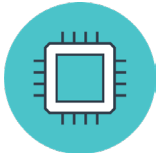
### Automation

Customizable rules engine



### Cross Analytics

Cross-system/sensor charts and stats



### Device Management

Additional layer of resource optimization



### Multi-tendency aspect

User hierarchies based on any IoT logic

Based on Microsoft Azure, the platform benefits from the highest degree of security, cross-application orchestration and fast development time.

Axonize's unique approach is evident in that it is based on an agile innovative SaaS solution combined with enterprise class IT and IoT Infrastructure. Axonize has built a SaaS layer on top of Microsoft Azure IoT services. This enables customers to reduce implementation time and human resources by configuring an IoT solution rather than programming it. All this while retaining the Microsoft Cloud infrastructure's scalability, data security and enterprise IT features as the basis.

## Some of our customers

